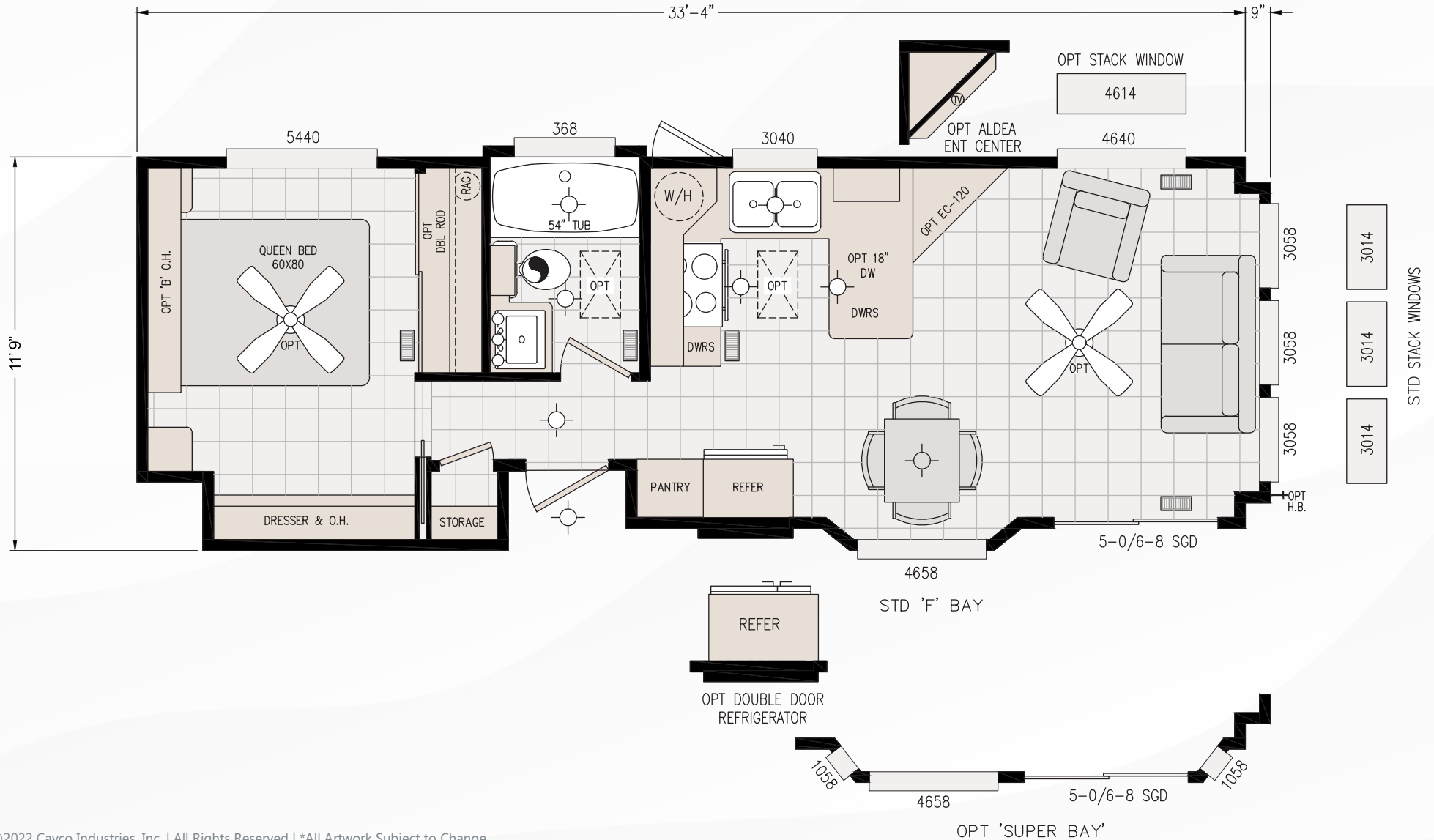




# SEDONA PARK MODEL RVS

## 120SN11351A | U-Kitchen, Patio Dining, Hall Exit



©2022 Cavco Industries, Inc. | All Rights Reserved | \*All Artwork Subject to Change

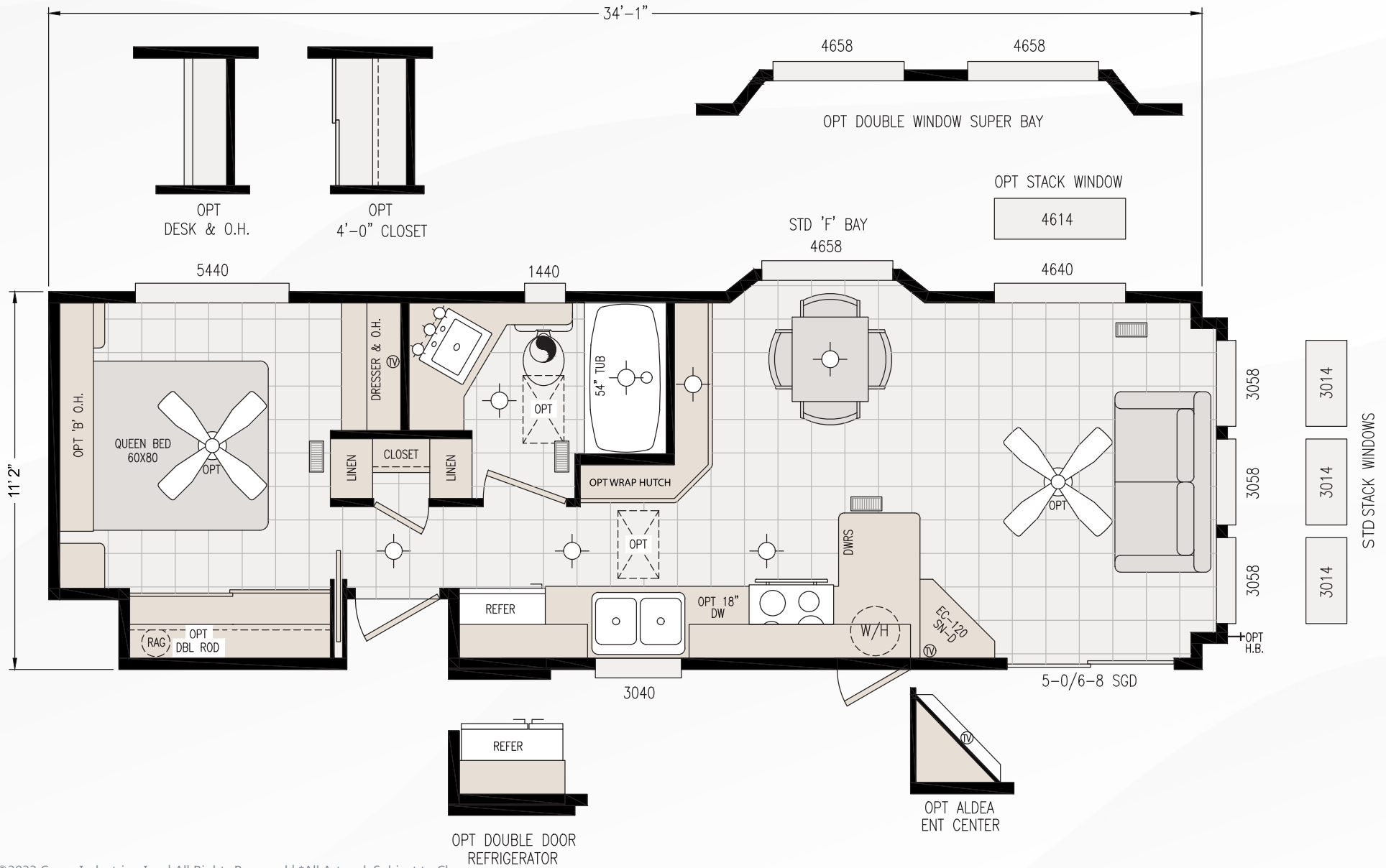






# SEDONA PARK MODEL RVS

## 120SN11351D | Galley Kitchen, Off Patio Dining, Hall Exit

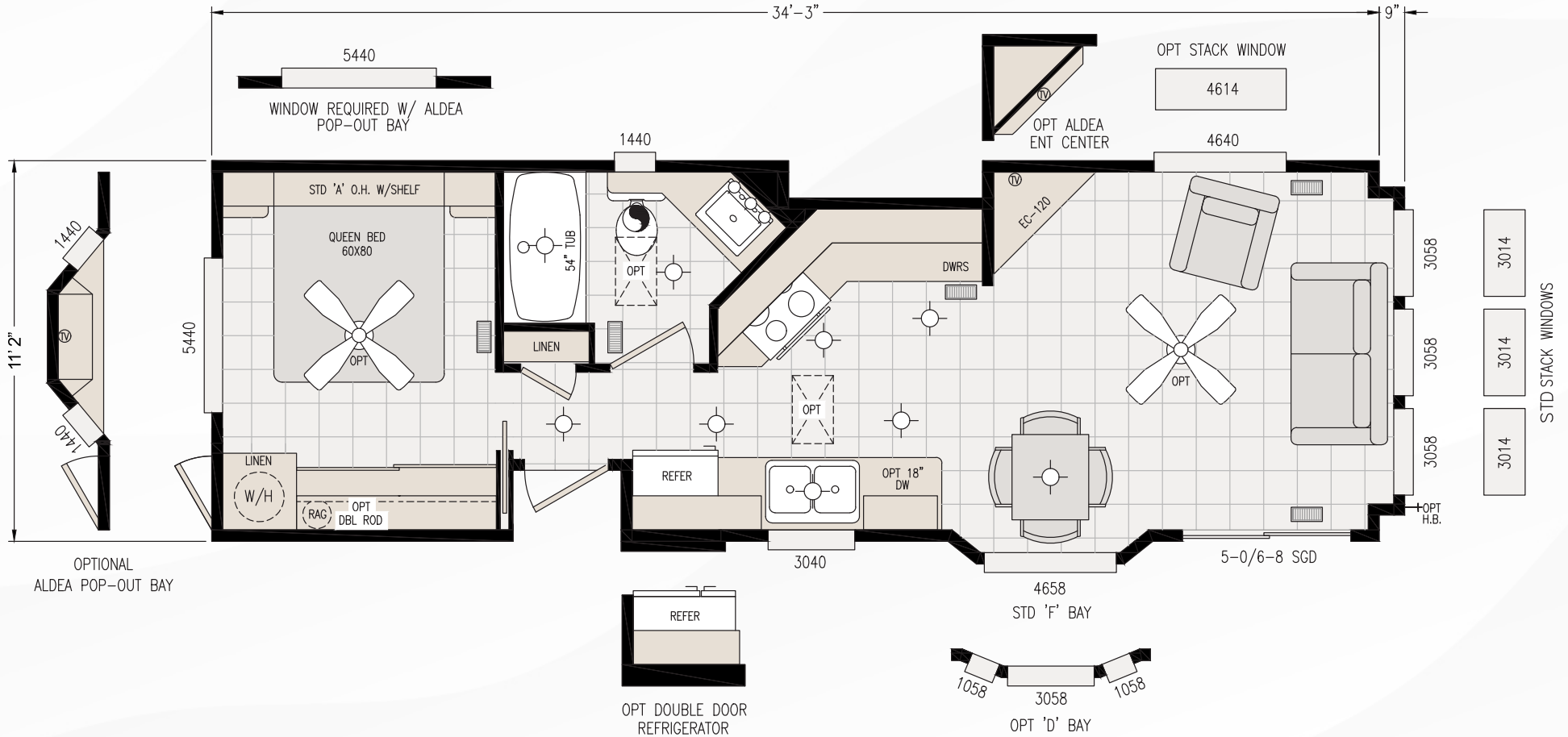


©2022 Cavco Industries, Inc. | All Rights Reserved | \*All Artwork Subject to Change



# SEDONA PARK MODEL RVS

120SN11351E | Alley Galley Kitchen, Patio Dining, Hall Exit

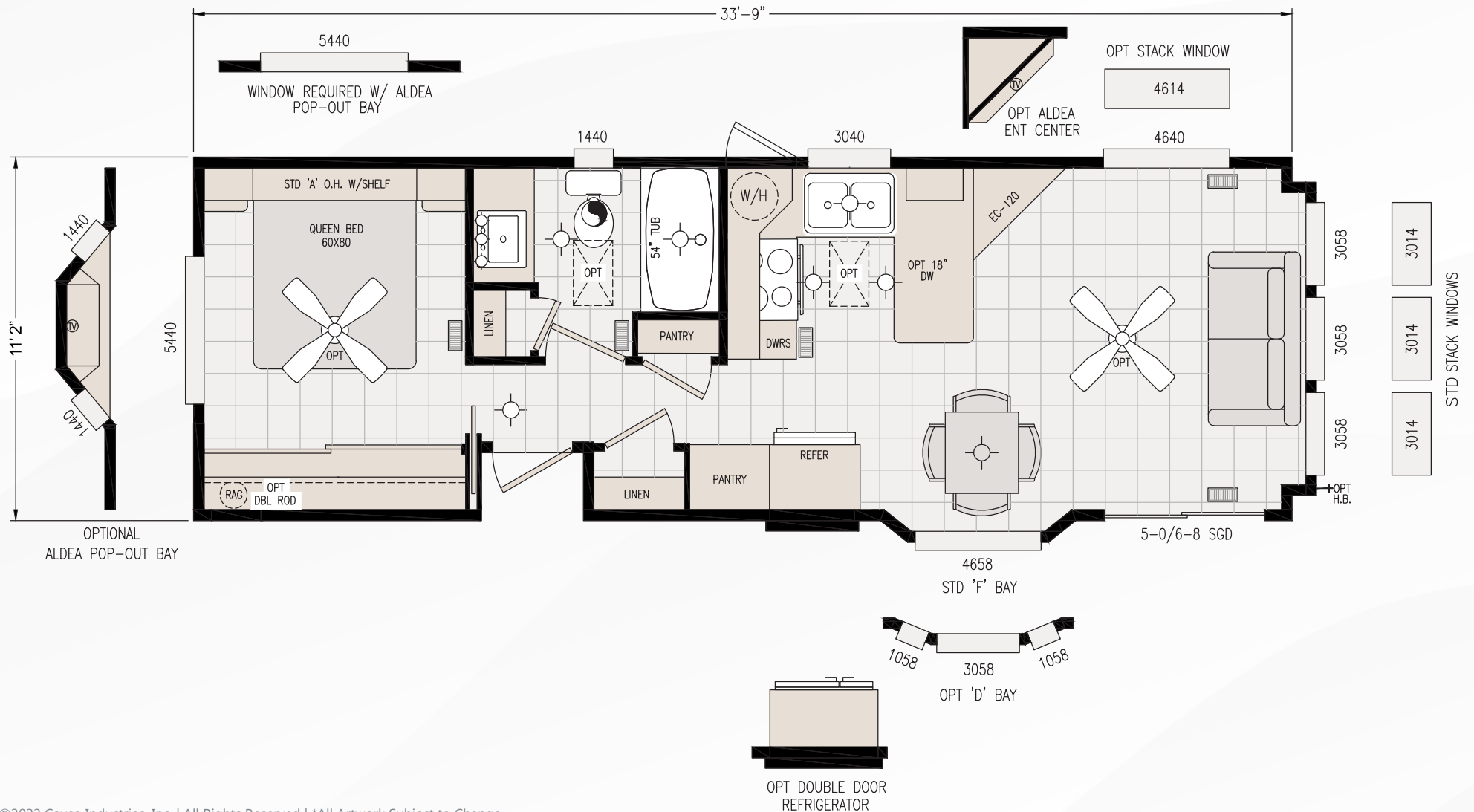


©2022 Cavco Industries, Inc. | All Rights Reserved | \*All Artwork Subject to Change



# SEDONA PARK MODEL RVS

## 120SN11351G | U-Kitchen, Patio Dining, Hall Exit

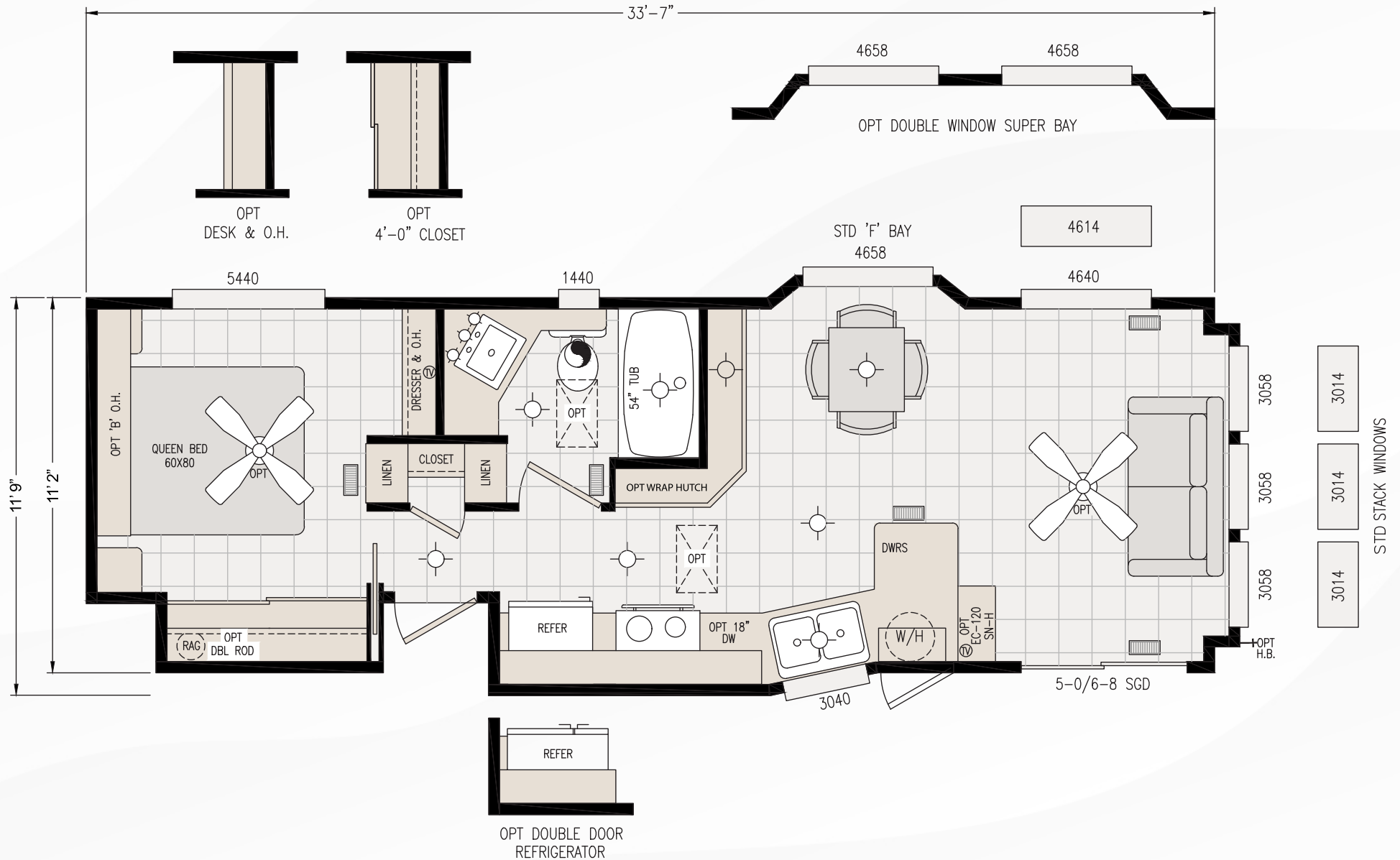


©2022 Cavco Industries, Inc. | All Rights Reserved | \*All Artwork Subject to Change



# SEDONA PARK MODEL RVS

120SN11351H | Kitchen Bay, Galley Kit, Off Patio Dining, Hall Exit

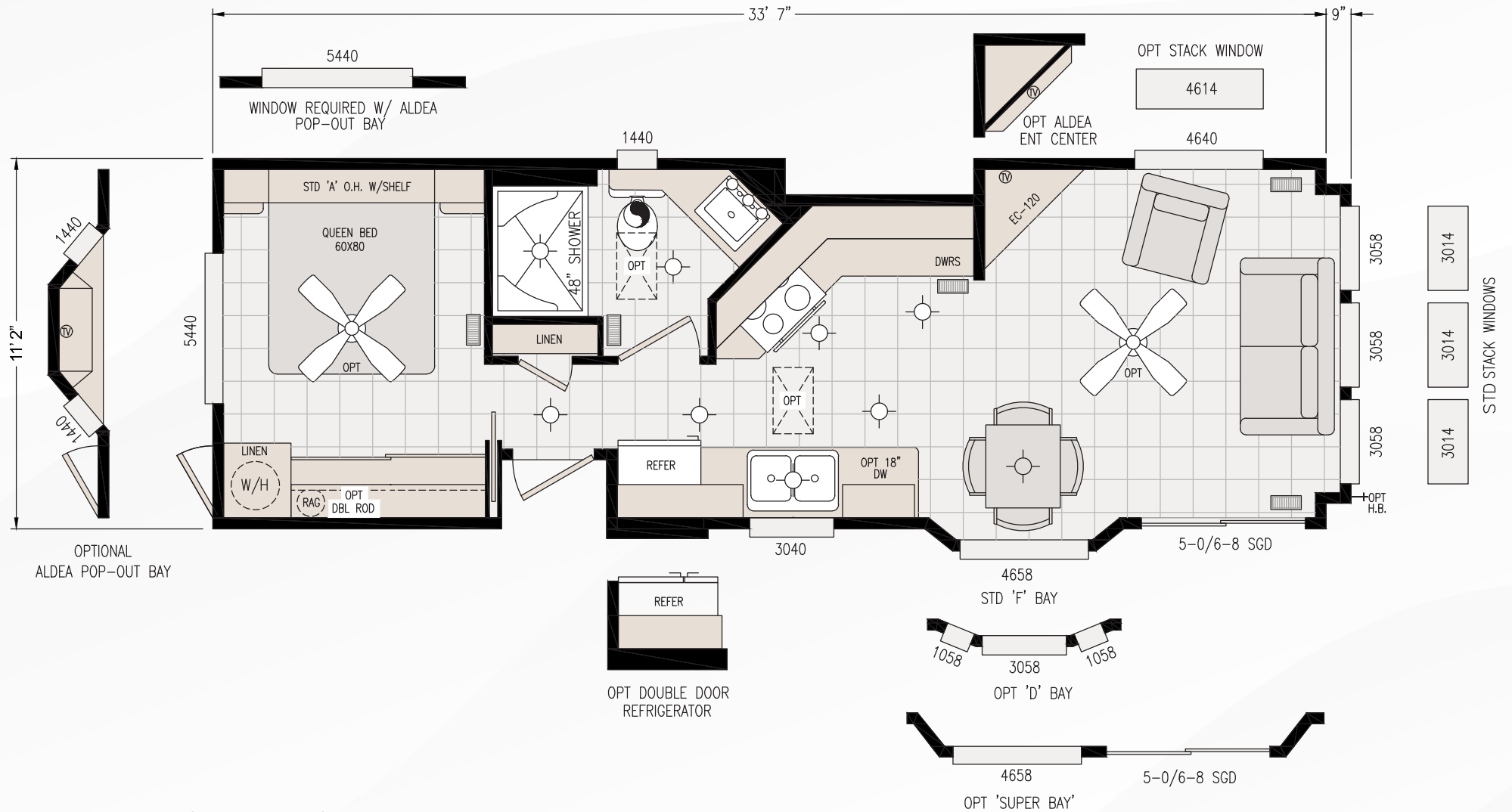


©2022 Cavco Industries, Inc. | All Rights Reserved | \*All Artwork Subject to Change



# SEDONA PARK MODEL RVS

120SN11351J | Alley Galley Kitchen, Patio Dining, Hall Exit



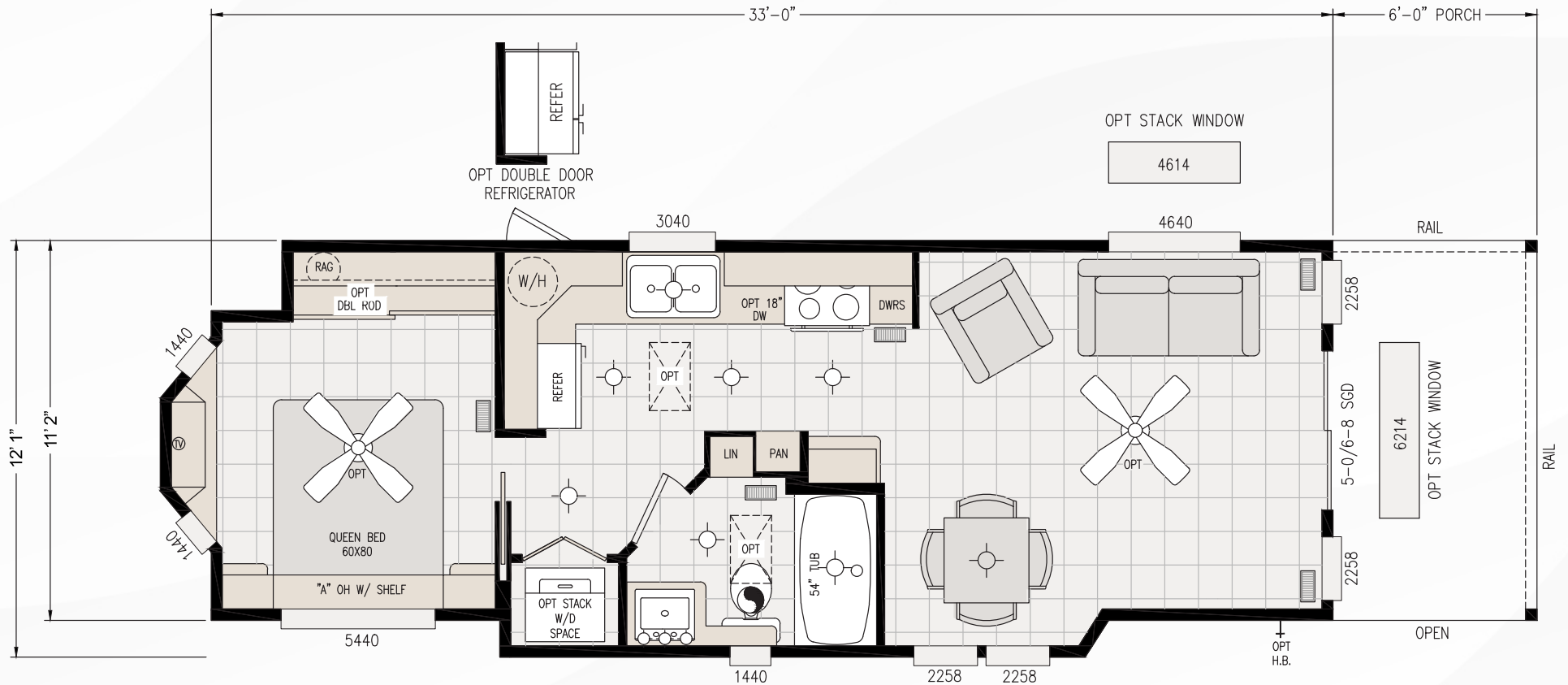
©2022 Cavco Industries, Inc. | All Rights Reserved | \*All Artwork Subject to Change





# SEDONA PARK MODEL RVS

120SN11351K | Carousel Kitchen, Patio Dining, Hall Exit, 6' Porch



©2022 Cavco Industries, Inc. | All Rights Reserved | \*All Artwork Subject to Change

# 2023 SEDONA SERIES STANDARD FEATURES

## INTERIOR

- Tape and textured walls throughout with rounded corners
- 9' Sidewalls with flat ceilings throughout
- White interior passage doors
- Valance with 2" white blinds
- "LX" Linoleum throughout except the bedroom
- Shaw carpeting with padding and tack strip in bedroom
- White interior paint throughout
- Smoke detector and fire extinguisher
- LP Leak Gas Detector
- 4" Recessed can lighting throughout (bulbs not included)

## KITCHEN

- General Electric 30" gas range
- General Electric 17. cu. ft. double door frost free refrigerator
- 30" range hood with exhaust fan and light
- Hardwood raised panel cabinet doors
- Finished cabinet bottoms
- New "Residential Style" Cove molding on cabinet overheads
- Upgraded cabinet and drawer pulls throughout
- Drawers with double steel roller guides
- Laminate countertops with 4" backsplash
- Single lever faucet
- Stainless steel kitchen sink
- Hidden cabinet door hinges
- Matching woodgrain overhead cabinet interiors

## BATHROOM

- Choice of fiberglass one piece tub/shower or shower only
- Single lever lavy bath faucet
- Single lever tub diverter with showerhead
- Recessed medicine cabinet on side or front of lavy
- Satin towel bar and tissue holder
- 36" high lavy cabinet with drop-in square lavy sink
- Laminate countertops with 4" backsplash

## BEDROOM

- Dresser with overhead cabinet (per floorplan)
- 54" x 40" egress window
- Single drawers under the wardrobe
- Mirrored wardrobe doors x 1 set

## EXTERIOR

- Square front pop-out exterior elevation
- Architectural shingled roof
- Vertical exterior siding
- Rear door with window, internal mini blind, and deadbolt
- Exterior lights at each door
- White vinyl framed, low "E", dual glaze windows
- White aluminum framed dual glaze sliding glass door
- Front and rear overhang
- Exterior GFI receptacle by sliding glass door

## PLUMBING, ELECTRICAL, HEATING & INSULATION

- PEX waterlines with low point drain
- L. approved electrical devices throughout
- 50-amp exterior main panel service with 25' supply cord
- 20-gallon fast recovery electric water heater with exterior access door
- Easy touch rocker light switches throughout
- R-11 fiberglass floor insulation
- R-13 fiberglass sidewall insulation
- R-22 cellulose blown insulation
- Black iron gas pipe run to rear of unit
- Under sink waterline shut-off valves
- Interior water heater switch for 20-gallon electric water heater
- Pre-wire for ceiling fan in living room and bedroom

## CONSTRUCTION

- Full I-beam chassis construction
- Transverse 2" x 6" floor joists
- Detachable hitch from main chassis
- Woven simplex underbelly material
- 8' x 12' high density floor decking
- 9' sidewalls
- 2" x 4" sidewalls 16" O.C.
- Pre-engineered scissor trusses 16" O.C.
- Nominal 6/12 pitch roof
- 30 gauge steel strapping for truss to sidewall and floor to sidewall strength
- RVIA / ANSI 119.5 approved

