

2021 PARK MODELS

COUNTRY MANOR



148038 SHOWN



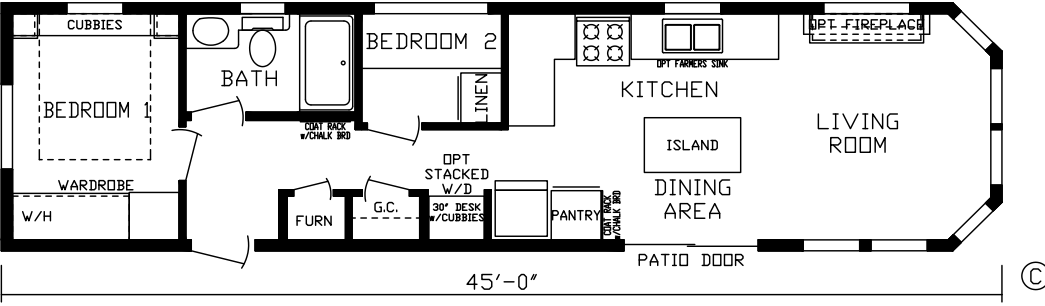
JUST PARK IT

“Build Your Own Unit” at fairmontparkmodels.com



12 WIDES

Model #148038



148038

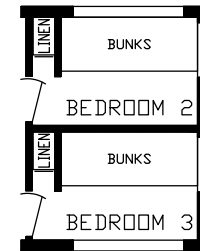
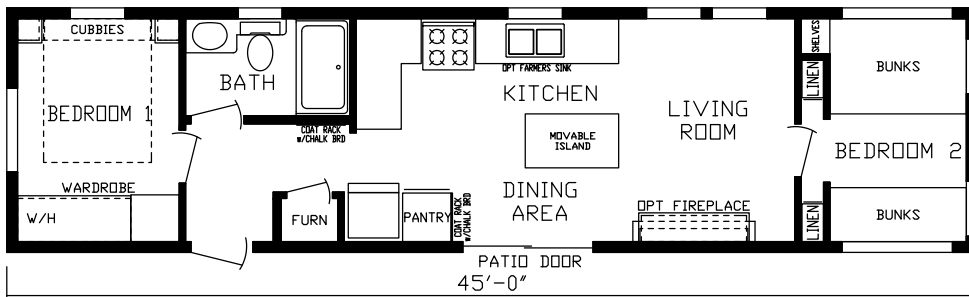


GET MORE FOR WHAT YOU PAY



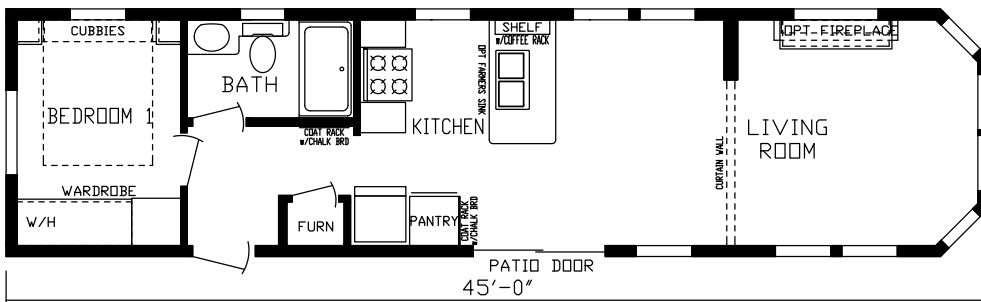
148038

Model #148042



PRO-258
Opt. 3BR Layout

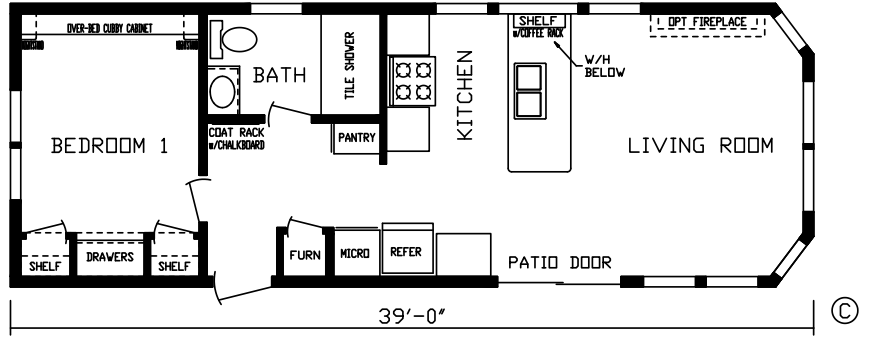
Model #148043



©

14 WIDES

Model #148029

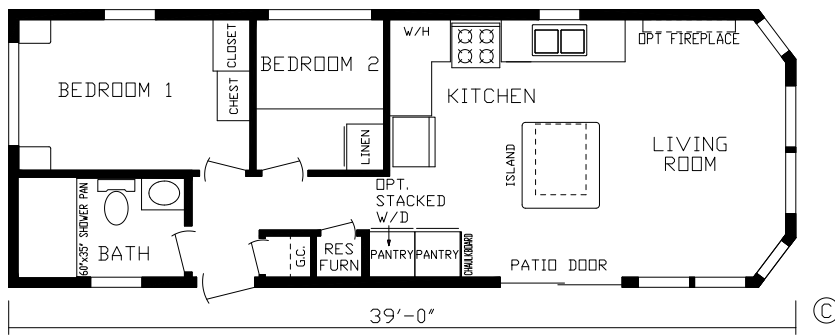


148029



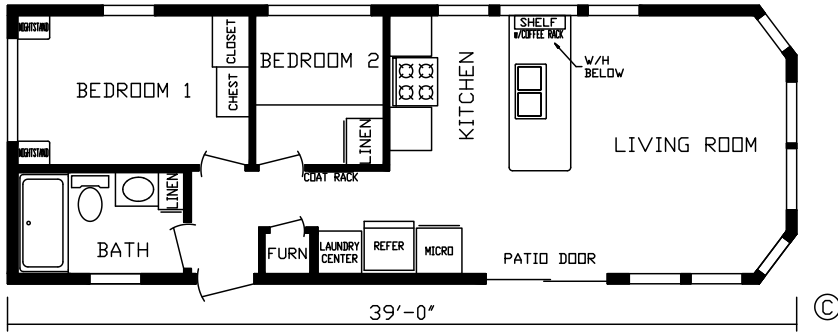
148029

Model #148033

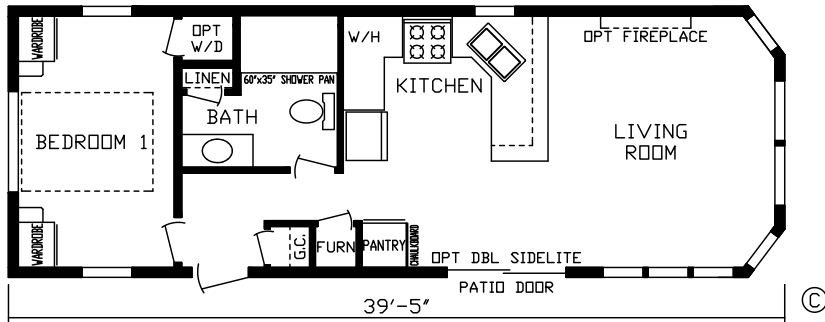


JUST PARK IT

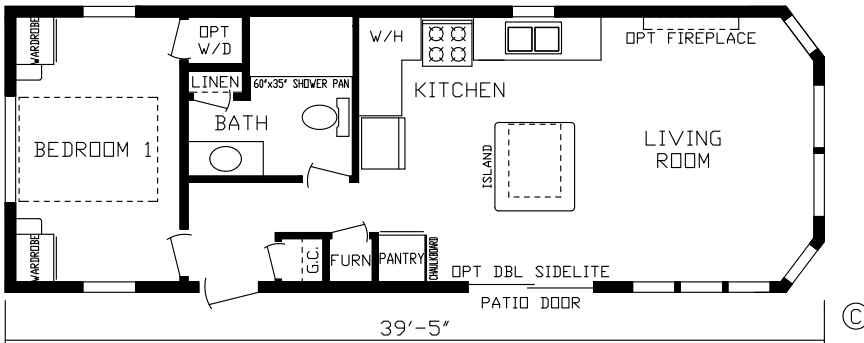
Model #148036



Model #148040



Model #148041



**Choose from Our
Hardwood Shaker
Cabinetry
Standard in ALL Fairmont
Park Models**



Rustic Shore Maple



Cottage Slate



Vintage



Stone Henge

Trim Choices

Ibis Trim



Java Trim



White Trim



Sandstone



Pacific



Pewter

**Choose from Our NEW Bedding
— Standard in Country Manor Park Models**

1. Kinro® Tilt to Clean, Single Hung Gridded, Vinyl Thermopane Windows w/Low E Glass
 2. Kinro® Trapezoid Windows w/Low E Glass per Floor Plan
 3. Royal Dutch Vinyl Lap Siding
 4. 7/16" OSB Sheathing Throughout
 5. R-20 Kraft Backed Fiberglass Insulation
 6. 2 x 6 Sidewall Studs, 16" O.C.
 7. HomeGuard™ Exterior Weather Wrap Throughout
 8. 10" I Beam Frame w/Detachable Hitch
 9. Breathable Mesh Underbelly
 10. 2 x 6 Floor Joists, 16" O.C. Transverse Framing for Sturdier Floors
 11. R-24 Fiberglass Floor Insulation
 12. 5/8" OSB Tongue & Groove Floor Decking
 13. Congoleum® Lux Flooring in Kitchen, Bath, Dining Room, Living Room, and Hall
 14. 40# Truss Roof Rafters, 16" O.C.
 15. R-20 Roof Insulation
 16. Innovent® Vent Chutes Above Insulation
 17. 7/16" Roof Decking
 18. Full Roof Coverage Ice and Water Shield
 19. Owens Corning® Oakridge Pro Lifetime Shingles, Eaves, Soffit, and Ridge Ventilation (Optional Metal Roof Shown)
 20. Residential 9 Lite 34 x 82 Rear Entry Door w/Storm Door per Floor Plan
 21. Hardwood Residential Cabinets w/Hardwood Stiles, Flat Panel Cabinet Doors, and Hidden Hinges
 22. Dual Bowl Stainless Steel Sink w/Utopia Pull Out Chrome Faucet
- Additional Features (not Shown)
- 1/2" Drywall Walls (Vinyl Covered)
 - 1/2" Residential Textured Drywall Ceilings
 - LED Ceiling Can Lights
 - Shaw Carpet® w/Rebond Pad in Bedroom



COUNTRY MANOR

FAIRMONT
Park Model RVs

GENERAL

- 2" x 6" Sidewalls, 16" O.C.
- 2" x 6" Floor Joists, 16" O.C. Transverse
- 5/8" OSB Tongue & Groove/Glued & Screwed Floor Decking (4' x 8')
- 30 PSF Rafters, 16" O.C.
- 2/12 Roof Pitch — 6/12 Dormer Roof Pitch (Per Print)
- 7/16" OSB Plating Under Siding
- ½" Drywall Vinyl Covered Walls

FLOORING

- Congoleum® Roll Goods Throughout

HEATING

- 50,000 BTU Gas Furnace
- 5" x 12" Residential Aluminum Heat Ducts
- 4" x 10" Floor Registers

ELECTRICAL

- Porch Light at Exterior Doors
- GFI Breakers Per Code
- 50 Amp Service w/25' Supply Cord
- Safe House Pkg. — Smoke Detector, LP Detector, Fire Extinguisher, & GFI Receptacles
- 1 Outside GFI Receptacle — Doorside Waterproof
- Recessed Overhead LED Lights
- 2 TV Jacks — Master BR & Living Room
- USB Port & Recept at Nightstands

DOORS

- Raised 6-Panel White Interior Passage Doors
- Vinyl Thermopane Patio Door
- Rear Entry Door w/Screen Where Applicable Per Plan

PLUMBING

- Double Bowl Stainless Steel Kitchen Sink
- Utopia Chrome High Arch Kitchen Faucet W/Pull Out
- 30 Gallon Electric Water Heater
- Residential Ceramic Commode
- Utopia Bath Faucets

BATH

- Exhaust Fan in Bath
- Porcelain Lav Bowl
- Lighted Medicine Cabinet
- 1 Piece Tub/Shower w/Curtain Per Plan
- Windows Most Plans

INSULATION

- R-20 Fiberglass Sprayed-In Insulation in Roof
- R-20 Fiberglass Kraft Backed Insulation in Sidewalls
- R-24 Fiberglass Insulation in Floor
- HomeGuard™ Exterior Weather House Wrap

CABINETRY

- 4 Cabinet Color Choices
- Hardwood Shaker Cabinets & Stiles — In Screwed
- European Style Hidden Cabinet Hinges
- Side Mounted Metal Drawer Guides w/Dovetail Wood Construction
- High Pressure Dual Laminated Seamless Countertops
- Tip Out Trays Under Sink

DÉCOR

- Wingate Wood Cornice Boards to Match Cabinets
- 2" Blinds, Selected Windows
- Vertical Blind for Patio Door
- ½" Residential Textured Drywall Cathedral Ceilings (Better Insulated & More Sound Proof)
- Bedspread, Pillows, & Shams — 3 Decor Color Tone Choices (Pacific Blue, Sandstone Brown, & Pewter Grey)

APPLIANCES

- Black Whirlpool® Appliances
- 2-Door Frost Free Refrigerator
- 30" Standard Gas Range
- Microwave
- Glass Canopy Range Hood

EXTERIOR

- Removable Hitch
- Royal Dutch Lap Vinyl Siding
- Owens Corning® Architectural Shingled Roof w/Lifetime Warranty
- Ice & Water-Weather Lock Under Shingles — Full Roof Coverage
- Ventilated Soffits
- Ridge Vent
- Residential Step Flashing at Dormer Transition
- Innovent® Vent Chutes in Roof
- Breathable Mesh Underbelly

WINDOWS

- Kinro® Egress Windows in All Bedrooms
- Kinro® Thermopane Vinyl Dual Glaze Low E Gridded Windows (White) Single Hung

FURNITURE

- Queen Slide-a-Bed Sleeper Sofa & Recliner
- Dinette Table w/4 Chairs or Bar Stools Per Plan
- Queen Bed w/Metal Bed Frame & Pillow Top Mattress

POPULAR OPTIONS

- Movable Island Per Plan
- Free Standing Island
- Air Conditioning — 13.5K BTU
- Stainless Steel Appliances
- Dishwasher
- 26" or 48" Fireplaces With or Without Stone
- 16 Gallon Efficiency Gas/Electric Water Heater w/DSI
- Lift Frame Bed w/Storage Box
- Glass Tub/Shower Door
- Shower IPO Tub/Shower
- Ceramic Backsplash Kitchen & Bath
- Metal Roof
- Solid Surface Countertops
- Sectional Sleeper Sofa
- 15-Lite w/Dual Sidelites IPO Patio Door
- Metal Underbelly
- Black Hardware



All descriptive representations are believed to be accurate at the time of publication. However, due to product improvement and changes in suppliers, design and production may vary. Note: Fairmont Homes reserves the right to make changes in price, colors, materials, components, and specifications and to discontinue models at any time without notice or obligation. Fairmont Homes assumes no responsibility for any error in type, print reproduction, specifications, or floor plans in this or any print material. ©01/2021 Fairmont Homes, LLC, ALL RIGHTS RESERVED

WHAT'S IN YOUR PARK MODEL?