

# PARK MODELS

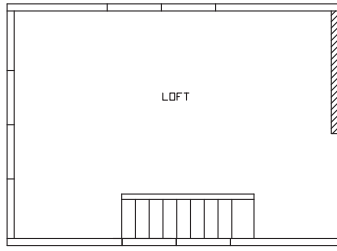
# CAVCO FAIRMONT Park Model RVs

# 150

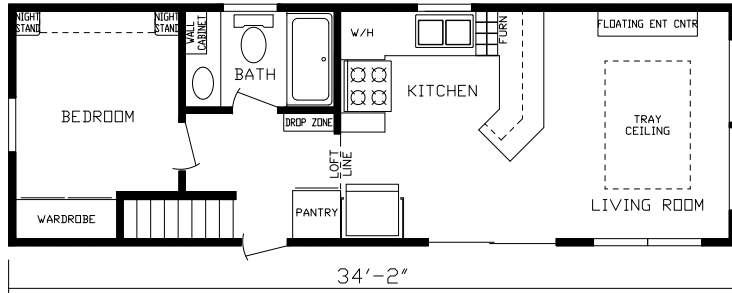


## JUST PARK IT

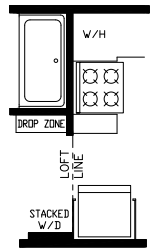
"Build Your Own Unit" at [fairmontparkmodels.com](http://fairmontparkmodels.com)



**190000 Loft**



**190000**



**R01 Opt Stacked Washer/Dryer**

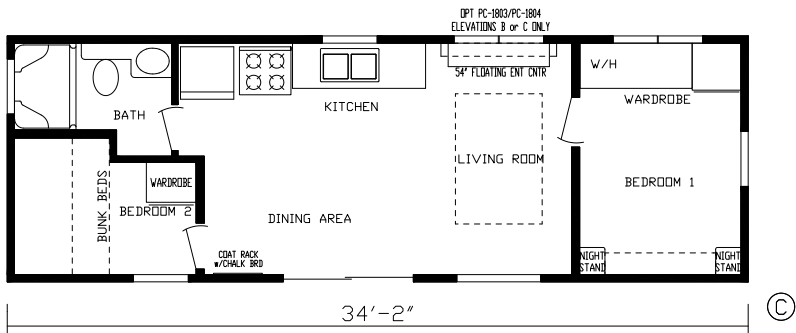


**Opt Front End on 190000, 190002, 190005, 190006**

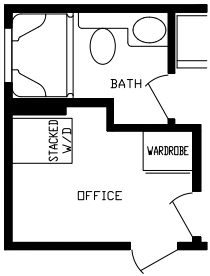


**Std Front End on 190000, 190005, 190006**





190002

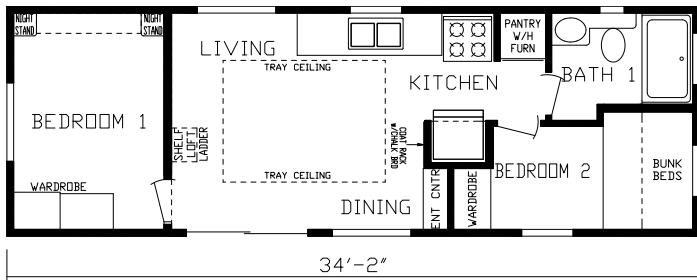


**R01 Opt  
Stacked  
Washer / Dryer**

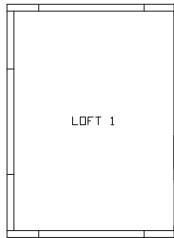
**PEW-222 Std Front End on 190002**



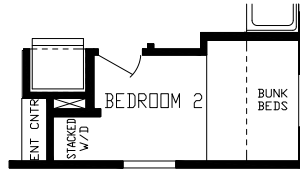
**CAVCO 150**



**190004**



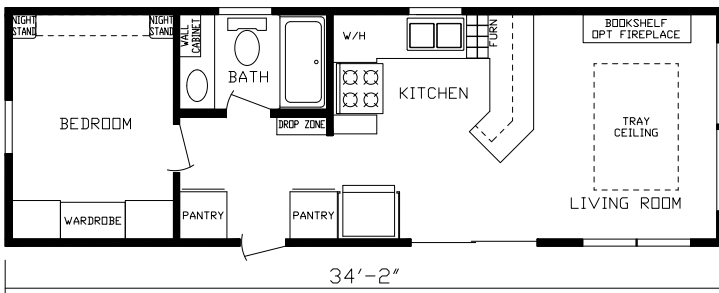
**190004 Loft**



**R01 Opt  
Stacked  
Washer / Dryer**



**Choose from Our  
Valance Fabrics  
Standard in Cavco  
150 Park Models**



**190005**



**Pacific**

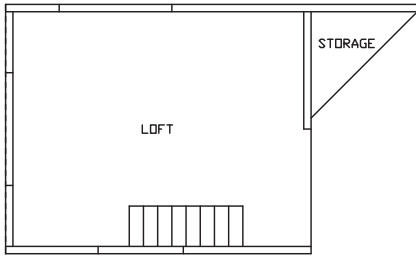


**Pewter**

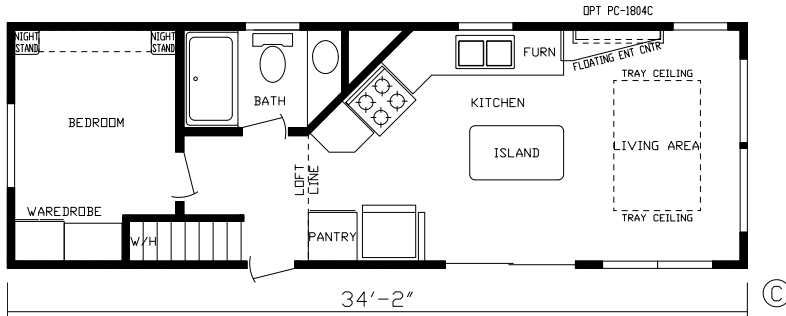


**Sandstone**

**GET MORE FOR WHAT YOU PAY**



**190006 Loft**

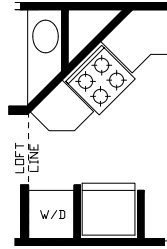


**190006**

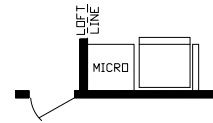
**Std Front End on 190006**



**R01 Opt Stacked Washer / Dryer**



**R02 Opt Make-Ready Washer/Dryer**



**Trim Choices**

**Ibis Trim**



**Java Trim**



**White Trim**



**Choose from Our Hardwood Shaker Cabinetry Standard in ALL Fairmont Park Models**



**Rustic Shore Maple**



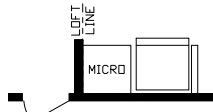
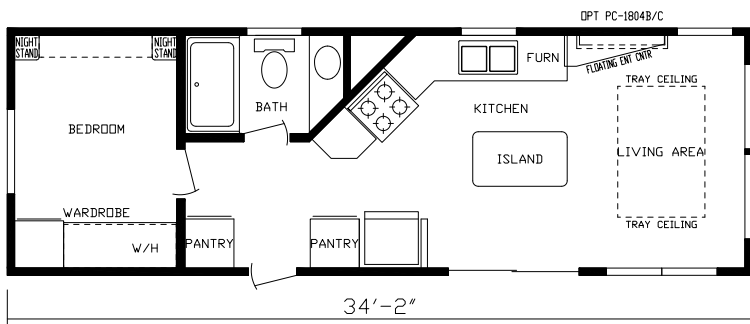
**Cottage Slate**



**Vintage**

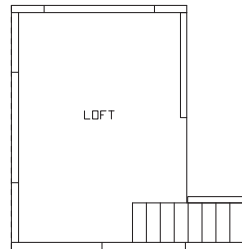


**Stone Henge**

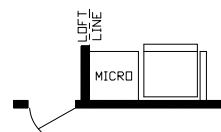
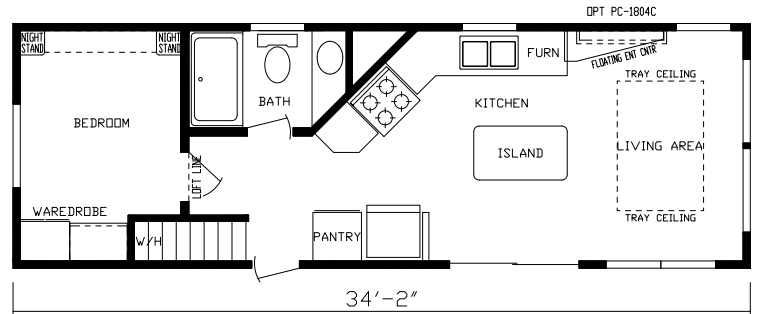


**R01 Opt Make-Ready Washer/Dryer**

**190008**

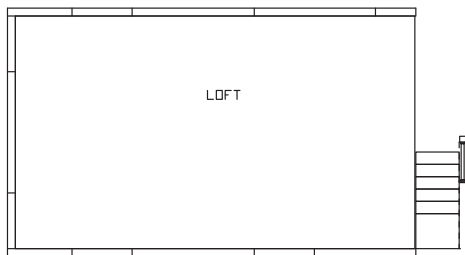


**190009 Loft**

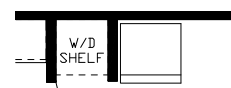
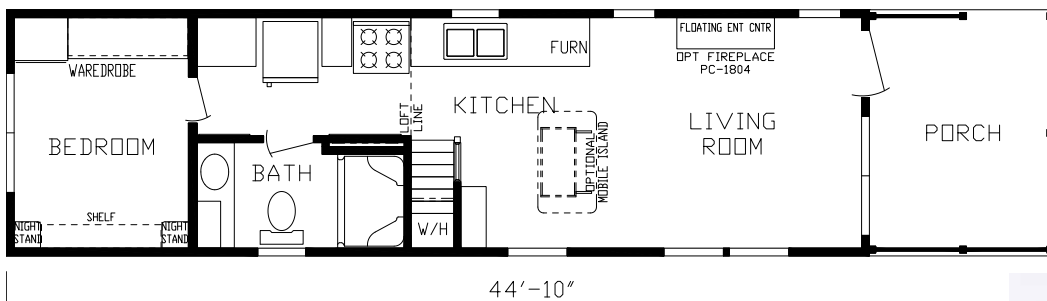


**R01 Opt Make-Ready Washer/Dryer**

**190009**



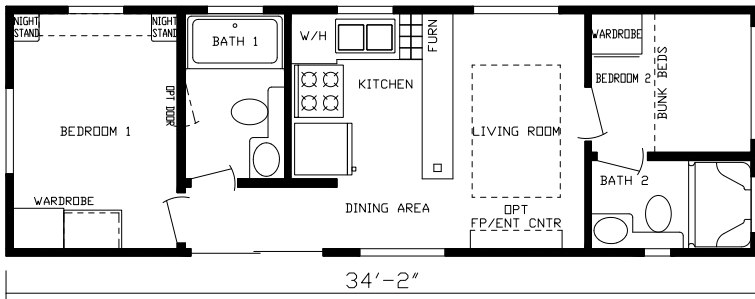
**190011 Loft**



**R01 Opt Stacked Washer / Dryer**

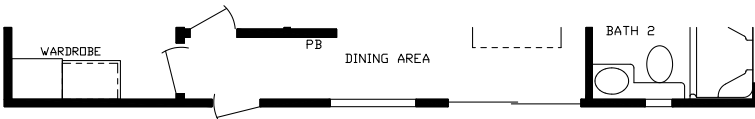
**190011**





©

**190012**



**R01 Opt Entry**



**CAVCO 150**



## GENERAL

- 8" Steel I-Beam Construction
- 30 PSF Rafter, 16" O.C.
- 7/16" Roof Decking
- 2" x 4" Sidewalls, 16" O.C.
- 7/16" OSB Sheathing Under Siding
- ½" Residential Tape & Textured Drywall Ceiling
- ½" Drywall Décor Vinyl Covered Walls
- 2" x 6" Transverse Floor Joist 16" O.C.
- 19/32" OSB Tongue & Groove/Glued & Screwed 4' x 8' Floor Decking
- Steel Strapping from Truss & Floor to Siding
- Pet Center per Plan
- Bunk Mattresses per Plan

## FLOORING

- Shaw® Carpet in Loft & at Stairway per Plan
- 5 lb. Rebond Pad
- Congoleum® Roll Goods Bath, Kitchen, Flat Floor Bedroom & Living Room

## HEATING

- 40,000 BTU Gas Furnace
- 5" x 12" Residential Aluminum Heat Ducts
- 4" x 10" Floor Registers

## ELECTRICAL

- Porch Light at Exterior Doors
- GFI Breakers Per Code
- 50 Amp Service w/25' Supply Cord
- Safe House Pkg. – Smoke Detector, LP Detector, Fire Extinguisher, & GFI Receptacles
- (1) Exterior GFI Receptacle - Doorside Waterproof
- Underbelly Receptacle Near Fresh Water Inlet for Heat Tape or Heated Hose
- Recessed Overhead LED Lights Throughout
- TV Jack at LR Entertainment Center
- USB Port & Recept at Bedroom Nightstands
- Lighted Ceiling Fan Living Room & Master Bedroom – Non Loft Models
- Lighted Ceiling Fan Living Room – Loft Models

## DOORS

- Raised 6-Panel White Interior Passage Doors
- 10 Lite Rear Door w/Deadbolt & Storm – Per Plan
- Vinyl Thermopane Patio Door per Plan

## PLUMBING

- Double Bowl Stainless Steel Kitchen Sink
- High Arch Kitchen Faucet w/Pull Out Sprayer
- 20 Gallon Electric Water Heater w/Exterior Access Door
- Residential Ceramic Commode

## BATHROOM

- Exhaust Fan
- Porcelain Lav Bowl
- Mirror
- 1 Piece Tub/Shower per Plan
- Window per Plans

## INSULATION

- R-19 Blown Insulation in Roof
- R-13 Fiberglass Kraft Backed Insulation in Sidewalls
- R-11 Fiberglass Insulation in Floor
- HomeGuard™ Exterior Weather House Wrap Wind Barrier

## CABINETRY

- 4 Cabinet Color Choices
- Hardwood Shaker Cabinets & Stiles — Pocket Screwed
- 40" Overhead Cabinets – Hardwood
- European Style Hidden Cabinet Hinges
- Side Mounted Metal Drawer Guides w/Dovetail Wood Construction
- High Pressure Dual Laminated Countertops & Backsplash
- Tip Out Trays at Kitchen Sink
- Adjustable Overhead Shelving
- Bedside Nightstands w/Receptacle, USB Port & Overhead Cabinets
- Floating Entertainment Center LR– Per Plan w/ TV Jack

## DÉCOR

- Fabric Window Valances in (3) Decor Choices (Blue, Brown & Grey)
- 2" Blinds, Selected Windows
- Residential Crown Molding & Door Trim
- 1/2" Residential Textured Drywall Ceilings (Better Insulated & More Sound Proof)
- Coat Rack w/Board Accent Wall
- Convenient Chalk Board over Coat Rack
- Residential Crown Molding & Door Trim
- Ceiling Tray w/Accent VOG

## APPLIANCES

- Black Whirlpool® Appliances
- Whirlpool® Frost Free Refrigerator
- Whirlpool® 30" Gas Range
- Glass Canopy 30" Stainless Steel Range Hood
- Microwave per Plan

## EXTERIOR

- Detachable Hitch
- Royal Dutch Lap Vinyl Siding
- Exterior Wainscot (3/4 Color & 1/4 Different Color)
- Owens Corning® 25-Year Roof Shingles
- Ice & Water-Weather Lock Under Shingles — Full Roof Coverage
- Ventilated Soffit
- Ridge Vent
- Residential Step Flashing at Dormer Transition
- Innovent® Vent Chutes in Roof
- Woven Shepweave Underbelly
- Lineals – Doorside & Hitch End (White)

## WINDOWS

- Kinro® Egress Windows in All Bedrooms
- Kinro® Thermopane Vinyl Dual Glaze Low E White Single Hung Gridded Windows
- Transom Windows LR, Loft & Bedroom per Plan

## POPULAR OPTIONS

- 1-Color Exterior Siding – No Wainscot
- White Vinyl Exterior Corner Posts
- Awning Rail (Omit Lineals)
- Pro Pac Air Conditioning - 13.5K BTU
- Wall Mount Loft Air Conditioner
- Metal Roof
- Metal Underbelly
- 100 amp Service (Direct Wire - No Power Cord)
- 26" or 48" Fireplace - with or without Stone
- Vertical Blind for Patio Door
- 16 Gallon Gas/Electric/DSI Water Heater
- Glass Tub/Shower Door
- Shower IPO Tub/Shower
- Lighted Medicine Cabinet over Bath Lav
- Black Hardware
- Black Faucets
- Stainless Steel Appliances
- Ceramic Backsplash - Kitchen & Bath
- Stainless Steel Farmers Sink per Plan
- Solid Surface Countertops
- Queen Slide-a-Bed Sofa
- Recliner
- Movable Island & (4) Chairs or Stools
- Dinette Table w/(4) Chairs
- Queen Bed (Metal Frame, Box Spring & Queen Mattress)
- Pillow Top Mattress
- Sectional w/Sleeper Sofa
- Bedspread, Pillows, & Shams in (3) Color Choices to Match Decor
- Bunk Spreads (Match Decor)
- Coffee Table w/Lift Up Storage
- End Tables
- Washer/Dryer per Plan



**JUST PARK IT**  
fairmontparkmodels.com



# WHAT'S IN YOUR PARK MODEL?

All descriptive representations are believed to be accurate at the time of publication. However, due to product improvement and changes in suppliers, design and production may vary. Note: Fairmont Homes reserves the right to make changes in price, colors, materials, components, and specifications and to discontinue models at any time without notice or obligation. Fairmont Homes assumes no responsibility for any error in type, print reproduction, specifications, or floor plans in this or any print material.

©10/2021 Fairmont Homes, LLC, ALL RIGHTS RESERVED